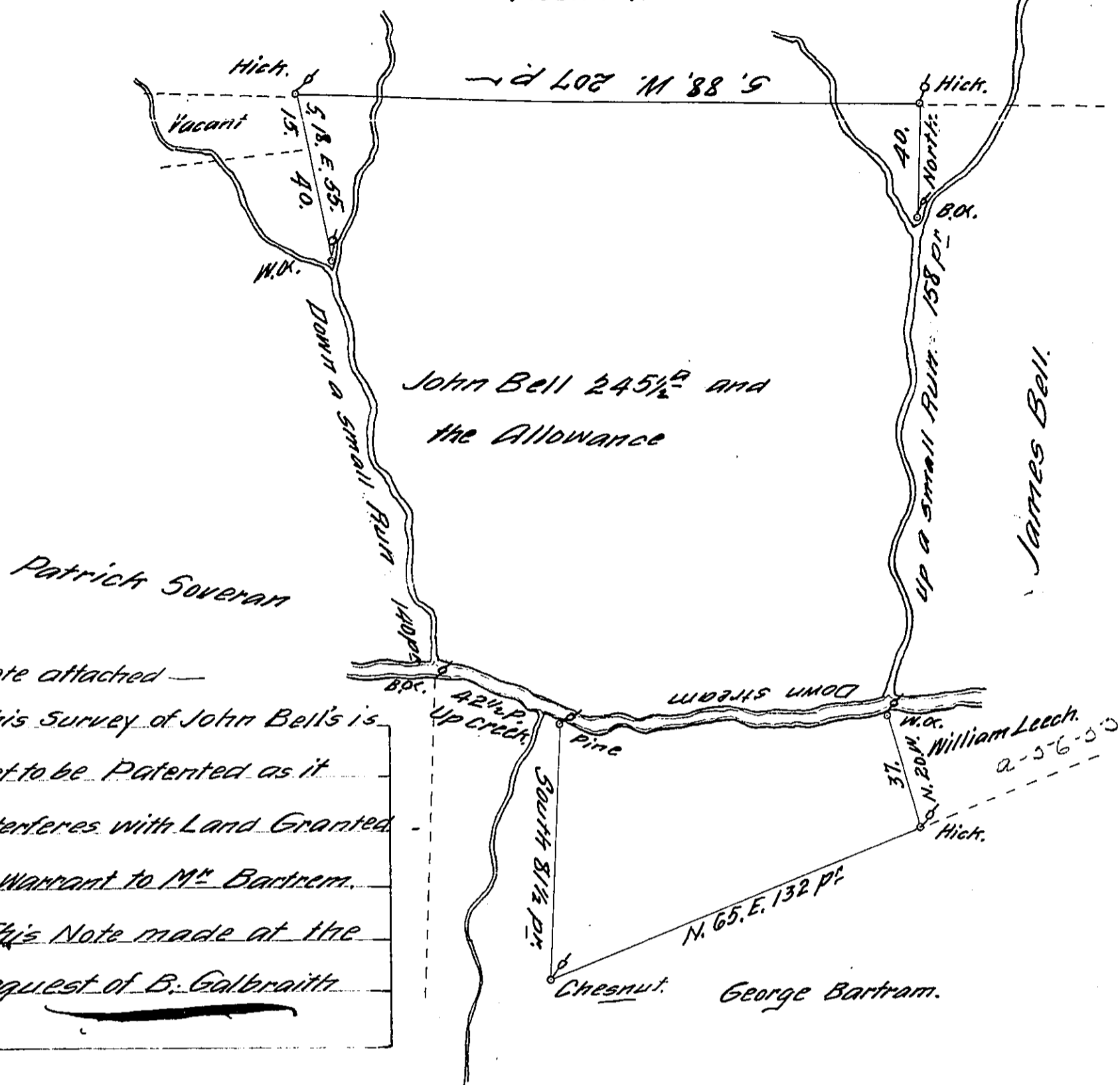


Mountain



Note attached —

This Survey of John Bell's is  
 not to be Patented as it  
 interferes with Land Granted  
 by Warrant to M<sup>r</sup>. Bartrem.  
 This Note made at the  
 request of B. Galbraith

Surveyed to John Bell on the first Day of September  
 1774 The above Described Tract of two Hundred forty  
 five and one half Acres and the Allowance of six p Ct.  
 Situate in Stoney Creek Valley upper Paxtang Town-  
 ship Lancaster County by Warrant of the 13<sup>th</sup>  
 May 1774 —

p Bartrem Galbraith D.S.

To John Lukens Esq<sup>r</sup> }  
 Sur<sup>v</sup>: General }

IN TESTIMONY that the above is a copy of the original remaining on file in  
 the Department of Internal Affairs of Pennsylvania, made  
 conformably to an Act of Assembly approved the 16th day of  
 February, 1833, I have hereunto set my Hand and caused  
 the Seal of said Department to be affixed at Harrisburg,  
 this ninth day of August 1911.

*Henry Howell*  
 Secretary of Internal Affairs.